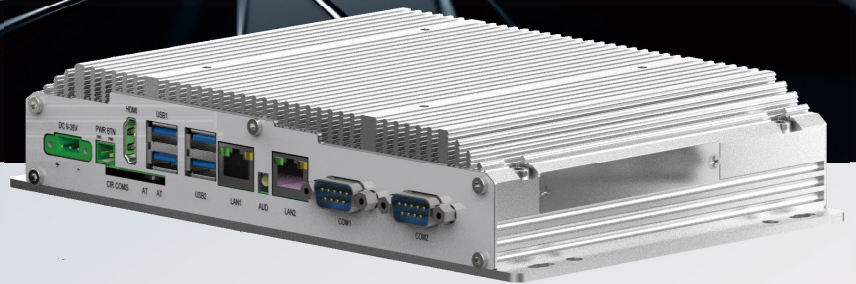


Powerful. Beautiful.

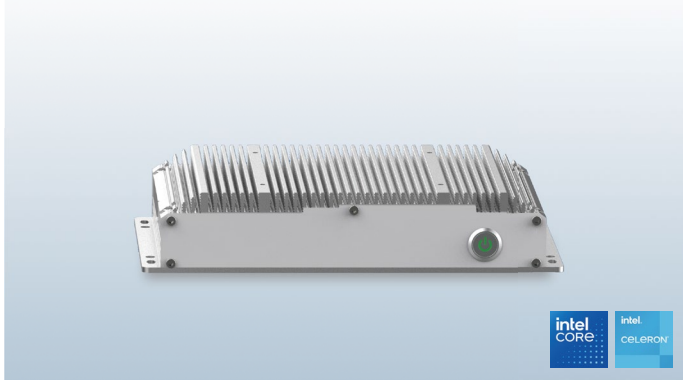
Excellence · Innovation

iBOX22XX



Shanghai Panelmate Electronics Co., Ltd.

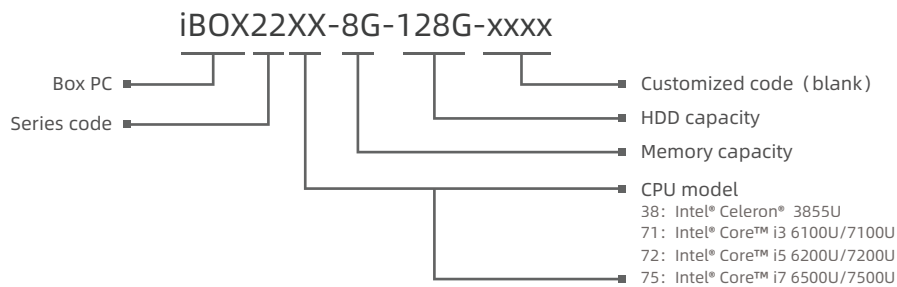
iBOX22XX Fanless Box PC



Features

- Compact aluminum-magnesium alloy profile housing, large area aluminum fin design to ensure a good cooling system
- Unilateral interface, Flat mounting or Wall-mounting
- 2 x Intel i210 Gbe LAN support EtherCAT and jumbo frames
- 4 x USB3.0
- 2 x COM (DB9) , Support BIOS options RS232 or 485
- Intel Celeron 3855U, Intel Core i3/i5/i7 Series CPU
- Scalable WIFI, 4G, 5G network
- fanless. operating temperature ranges from -20 to 70 ° C
- DC 9~36V

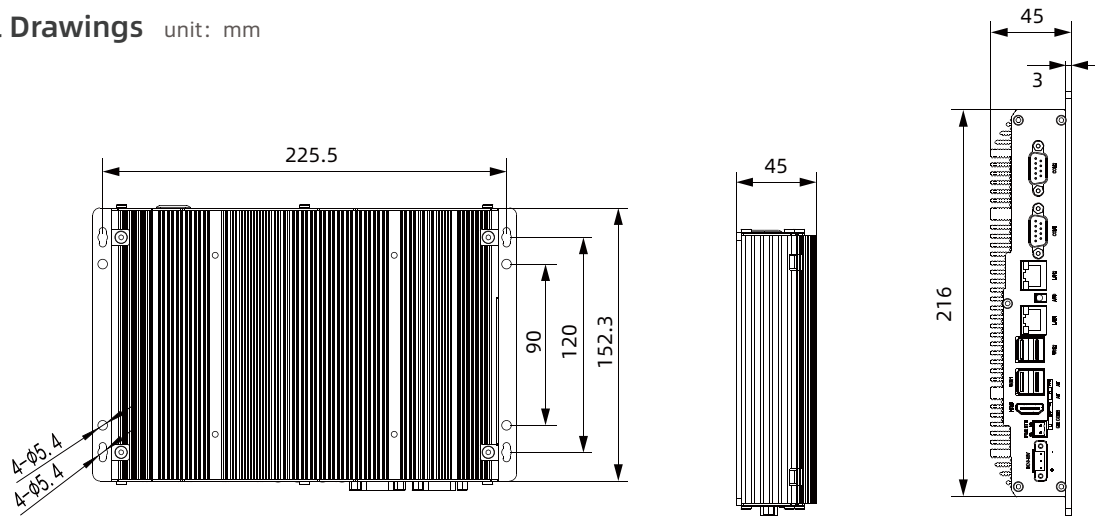
Namely Rule



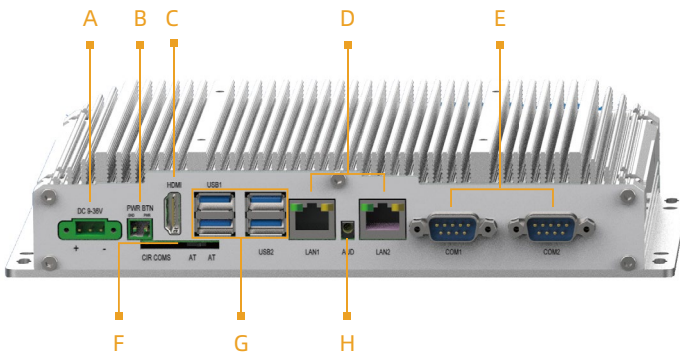
Specifications

Model		iBOX22XX			
Processor	CPU	Intel® Celeron® 3855U	Intel® Core™ i3 6100U/7100U	Intel® Core™ i5 6200U/7200U	Intel® Core™ i7 6500U/7500U
	Frequency	1.6GHz	2.30GHz	2.80GHz	3.10GHz
	Cache	2MB	3MB	3MB	4MB
	Memory	DDR4-2133 Max: 32GB			
	BIOS	AMI UEFI 64Mbit			
I/O	LAN	2 x Intel i210-AT 1000Mbps RJ45 with surge protection			
	USB	4xUSB3.0			
	COM	2xRS232/RS422/RS485, The interface is isolated from TVS (DB9), and the RS485 supports automatic flow control			
	HDMI	The highest resolution supported is available 4096*2160@24Hz			
	Indicator	1xPower light			
	Input Voltage	DC 9~36V, 2x2 pin connection terminal			
	Audio	Realtek ALC662VD audio controller, Supports 5.1 channels			
	Control Switch	1xPower, 1xCLR/CMOS, 1xAT/ATX Switch			
OS	OS	Windows 7, Windows 10, Linux, etc			
Physical	Dimension (L x W x H)	216mm x 152.3mm x 45mm (8.50" x 6.00" x 1.77")			
	Box Structure	Compacted aluminium-magnesium alloy profile housing, Large aluminum fins dissipate heat GND protection			
	Mounting	Flat mounting, Wall-mounting			
	Power	25W			
	Environment	Operating Temperature	-20~70°C		
Storage Temperature		-40~80°C			
Relative Humidity		5~95% (Non condensation)			
Shock		Operating 10G peak acceleration(11 ms duration), follow IEC 60068-2-27			
Vibration		Operating Random Vibration Test 5~500Hz, 1Grms@with HDD; 2Grms@with SSD, follow IEC 60068-2-64			
EMC		CE/FCC Class A			

Technical Drawings unit: mm



External I/O View



Interface definition:

- A: DC IN
- B: Power Switch
- C: HDMI port
- D: 2 x Intel Gigabyte LAN
- E: 2 x COM
- F: CLR/CMOS
- G: 4xUSB
- H: Audio

Ordering Information

Model	Description
iBOX22XX	CPU:Null, RAM: Null, mSATA: Null; 2xCOM (RS232/485 BIOS switchable) , 2 x LAN, 4 x USB3.0, 1xHDMI, 1xAudio, DC 9~36V power input
iBOX2238-4G-128G	CPU: Intel® Celeron® 3855U, RAM: 4G, mSATA: 128G; 2xCOM (RS232/485 BIOS switchable) , 2 x LAN, 4 x USB3.0, 1xHDMI, 1xAudio, DC 9~36V power input
iBOX2271-4G-128G	CPU: Intel® Core™ i3 6100U/7100U, RAM: 4G, mSATA: 128G; 2xCOM (RS232/485 BIOS switchable) , 2 x LAN, 4 x USB3.0, 1xHDMI, 1xAudio, DC 9~36V power input
iBOX2272-4G-128G	CPU: Intel® Core™ i5 6200U/7200U, RAM: 4G, mSATA: 128G; 2xCOM (RS232/485 BIOS switchable) , 2 x LAN, 4 x USB3.0, 1xHDMI, 1xAudio, DC 9~36V power input
iBOX2275-4G-128G	CPU: Intel® Core™ i7 6500U/7500U, RAM: 4G, mSATA: 128G; 2xCOM (RS232/485 BIOS switchable) , 2 x LAN, 4 x USB3.0, 1xHDMI, 1xAudio, DC 9~36V power input

Optional Accessories

RAM	DDR4-2400MHz, 4GB, 8GB, 16GB, 32GB
Msata	64GB, 128GB, 256GB, 512GB, 1TB

Packing List

Terminal	2pin Phoenix Terminal
Terminal	3pin Phoenix Terminal

Note: Package contents are subject to change without prior notice